

VOTEC 322

ASSEMBLY MANUAL



Wing Span:91 in /2311mm	Flying Weight:8500-9000g;
Wing Area:96.66sq.dm;	Empty weight:4800g
Length:88.5in/2249mm ;	Engine:60CC Gas

CAUTION : this plane is not a toy and should be kept away children under 16 years of age! Before use , please carefully read this manual.

●First-time builders should seek advice from people having building experience in order to assemble the model correctly and to produce its performance to full extent .

●Assemble this kit only in places out of children's reach!

●Take enough safety precautions prior to operating this model.

You are responsible for this model's assembly and safe operation!

●Always keep this instruction manual ready at hand for quick reference,even after completing the assembly.

Product Packing List

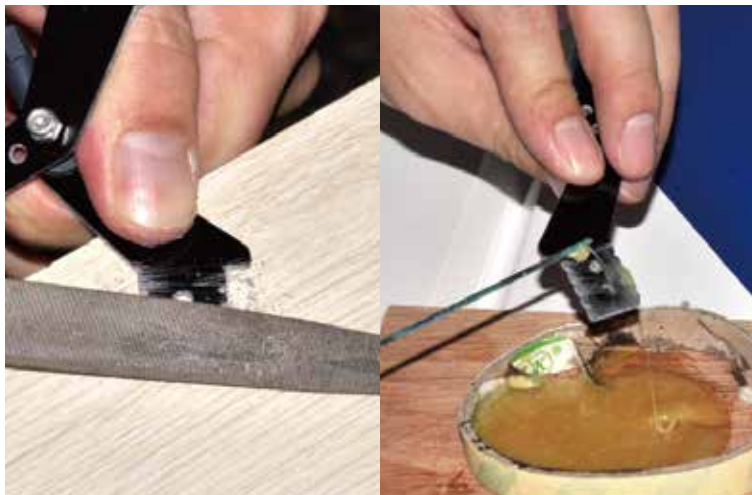


Wing servo mounting method

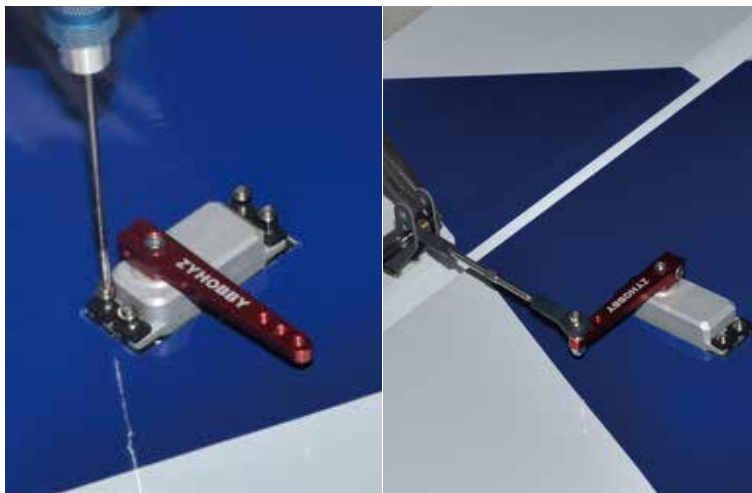


Prepare the individual parts for the wing servos

- Rudder x 2 pcs
- Rudder angle x 4pcs
- Tie rods x 2
- Rocker x 2



Rough up the rudder angle with a file, the AB glue will adhere more easily, the Insert the rudder horn with the AB glue applied onto the wing;

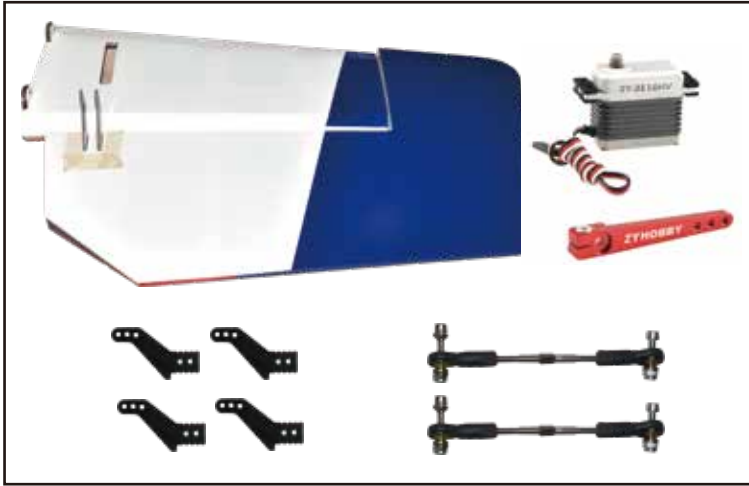


Install the rudder into the wing, fix it with screws, install the rocker arm Then adjust the length of the tie rods, and install them on top of the rudder horns and servos respectively;

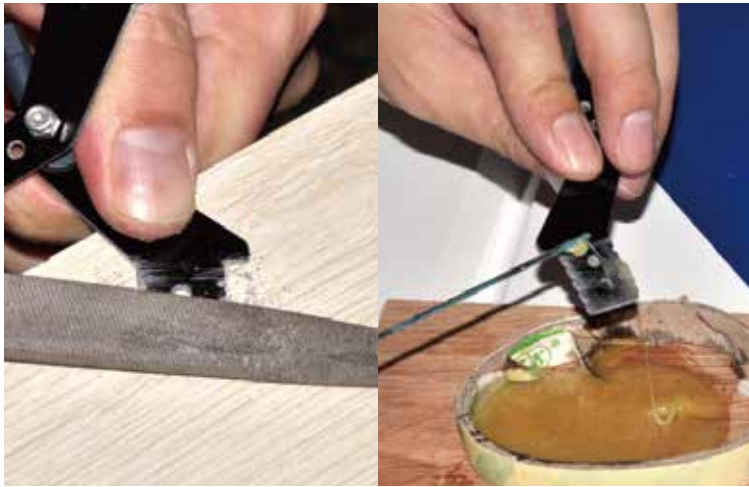


Examples of rudder angle, tie rods, rocker arms, and rudder completion;

Flat Tail Servo Installation



Prepare the individual parts for the flat tail;
Rudder x 2 pcs.
Rudder horns x 4 pcs
Tie rods x 2 pcs
Rocker arms x 2



Rough up the rudder angle with a file, the AB glue will adhere more easily, then insert the rudder horn with the AB glue applied onto the wing;



Install the rudder into the wing, fix it with screws, install the rocker arm. Then adjust the length of the tie rods, and install them on top of the rudder horns and servos respectively;

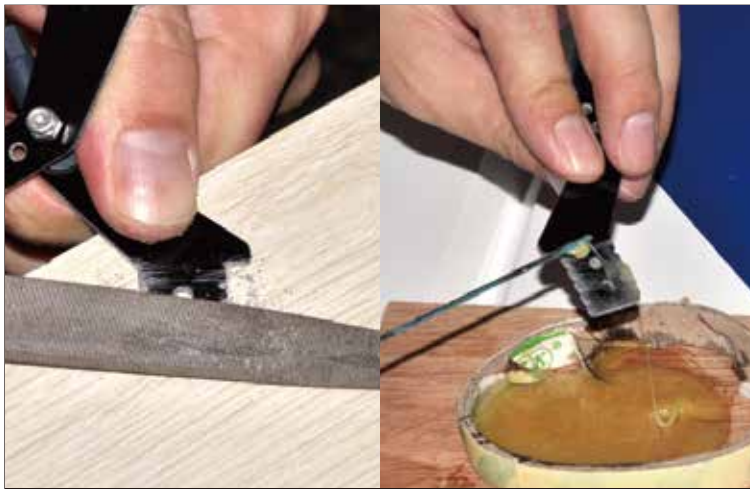


Examples of rudder angle, tie rods, rocker arms, and rudder completion;

Rudder Servo Installation



Prepare the individual parts for the flat tail;
Rudder x 1 pc.
Rudder horns x 2 pcs
Tie rods x 1 pcs
Rocker arm x 1 pc



Rough up the rudder angle with a file, the AB glue will adhere more easily, then insert the rudder horn with the AB glue applied onto the wing;



Install the rudder into the wing, fix it with screws, install the rocker arm. Then adjust the length of the tie rods, and install them on top of the rudder horns and servos respectively;



Examples of rudder angle, tie rods, rocker arms, and rudder completion;

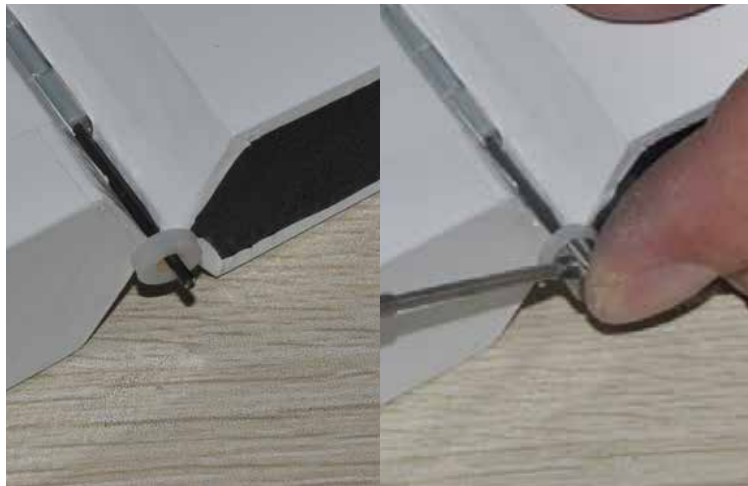
Installation of rudder and drogue



Prepare the rudder,
connecting rod and fixing screws.



Align the rudder with the drogue position
and insert the connecting rod through the
top hole position;



After inserting the connecting rod,
put in the spacer first, and then tighten
the screws for fixing.
Tighten the fixing screws;



How to install the tail wheel



Prepare the tail wheel components



Screw the tailwheel to the bottom of the wing first (with the holes already cut)



Make holes in the flat tail with an electric drill for mounting the spring catches. Then snap the spring to the tail wheel and spring catch respectively;



How to install the landing gear



Prepare the landing gear components as shown in the figure.



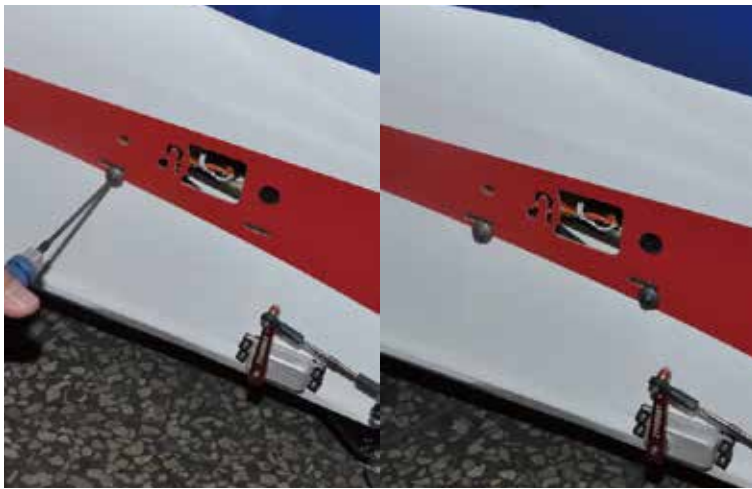
Install the axle on the landing gear first.



Put the wheel on the axle and secure it with screws, then put the wheel cover in, as shown in the figure with screws. Secure the wheel cover to the landing gear;



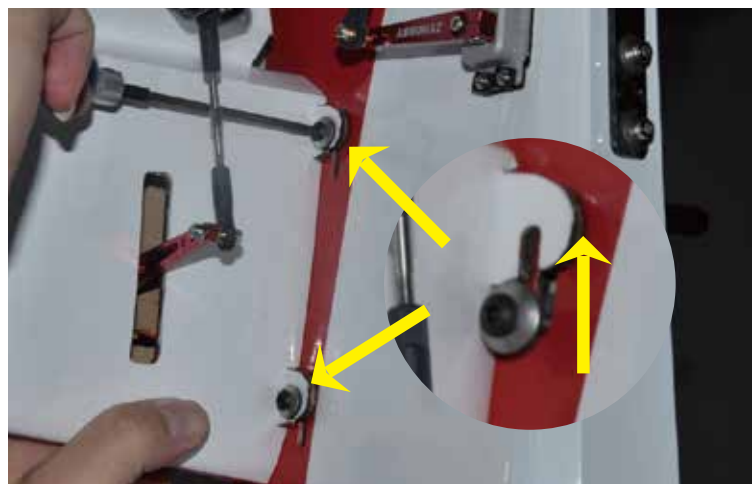
How to install the flat tail



First, screw the fixed flat-tail into the fuselage holes with the screws
As shown in the picture;



Insert the carbon fiber tube, and then set the flat tail into the (servo link cable is connected to the fuselage being extension cable first);



Push the screw up to the fixed position and tighten it;

Installation method and precautions for the wing



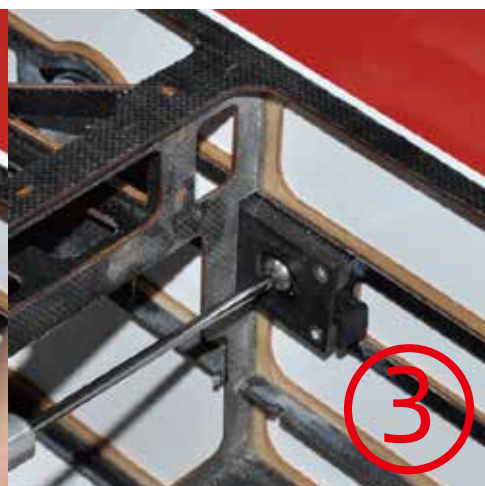
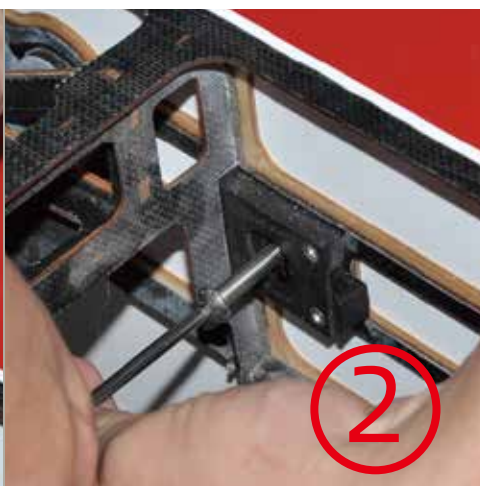
Pass the carbon fiber tube through the pre-drilled holes in the fuselage.



Put the wing into the carbon fiber tube, and put the rudder connector into the fuselage through the reserved hole;

For the first time use, you need to operate the screws for fixing according to the following figure;

1. Apply strong screw glue to the screws as shown in Figure 1;
2. Put the screws into Figure 2 and screw the screws to the proper position Fig. 3;





Pass the carbon fiber tube through the pre-drilled holes in the fuselage first.



Align the screws for wing fixing with the quick release holes



Before inserting into the quick release hole, push forward the snap at the red circle to After the screws enter the holes, loosen the clips;



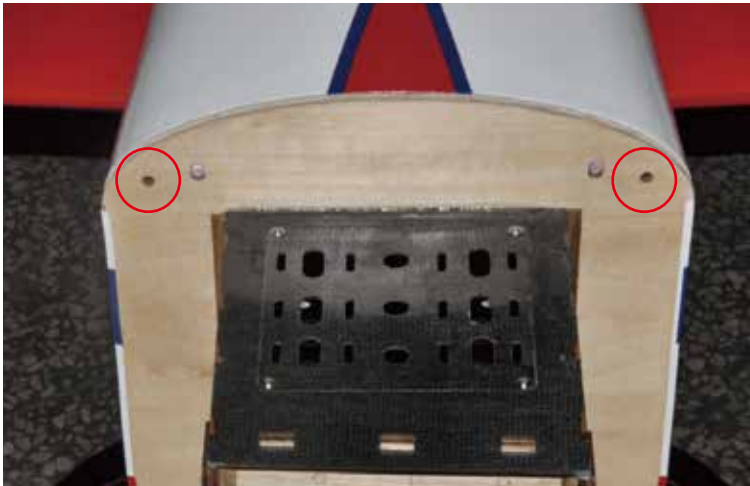


Install the engine

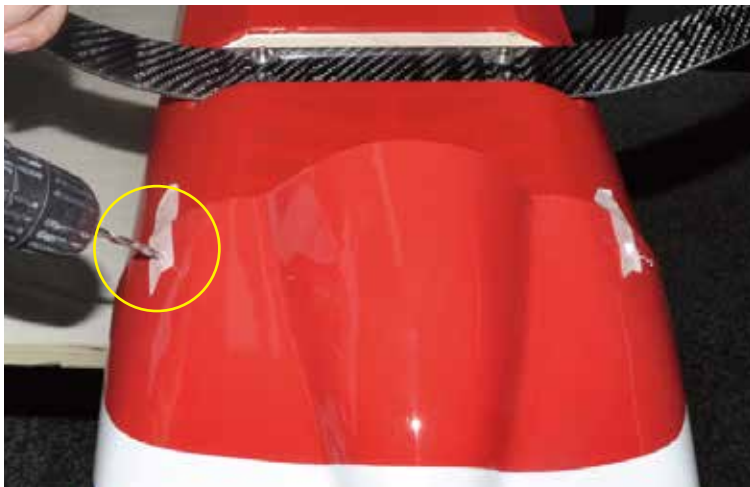


Install the throttle servo

How to install the cowl



Place the cowl in place, align it and secure it with screws;



Flip the body over and drill holes for the bottom with an electric drill (need to proofread the hole position in advance)



Engine opening position
For GP76 engine

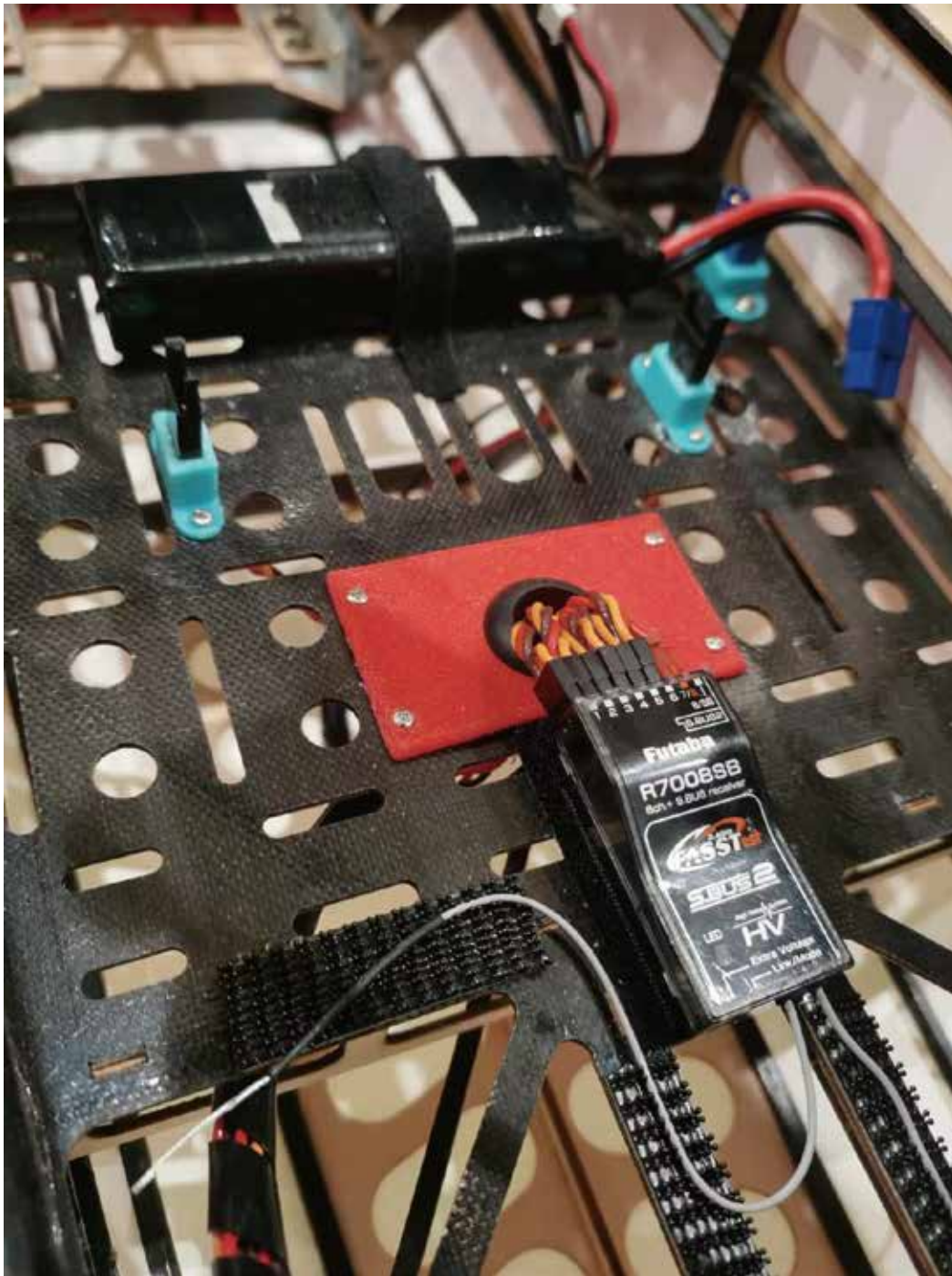
How to install the cockpit



Align the cockpit to the fuselage position,
with the circle pointing backwards
Push on the snap buttons
(there is one on each side).



Push the cockpit down into place.



Receiver mounting position

Wingtip Installation Method



Wingtip Installation Method



Put the screws into the mounting holes, align the wing holes and Tighten it;

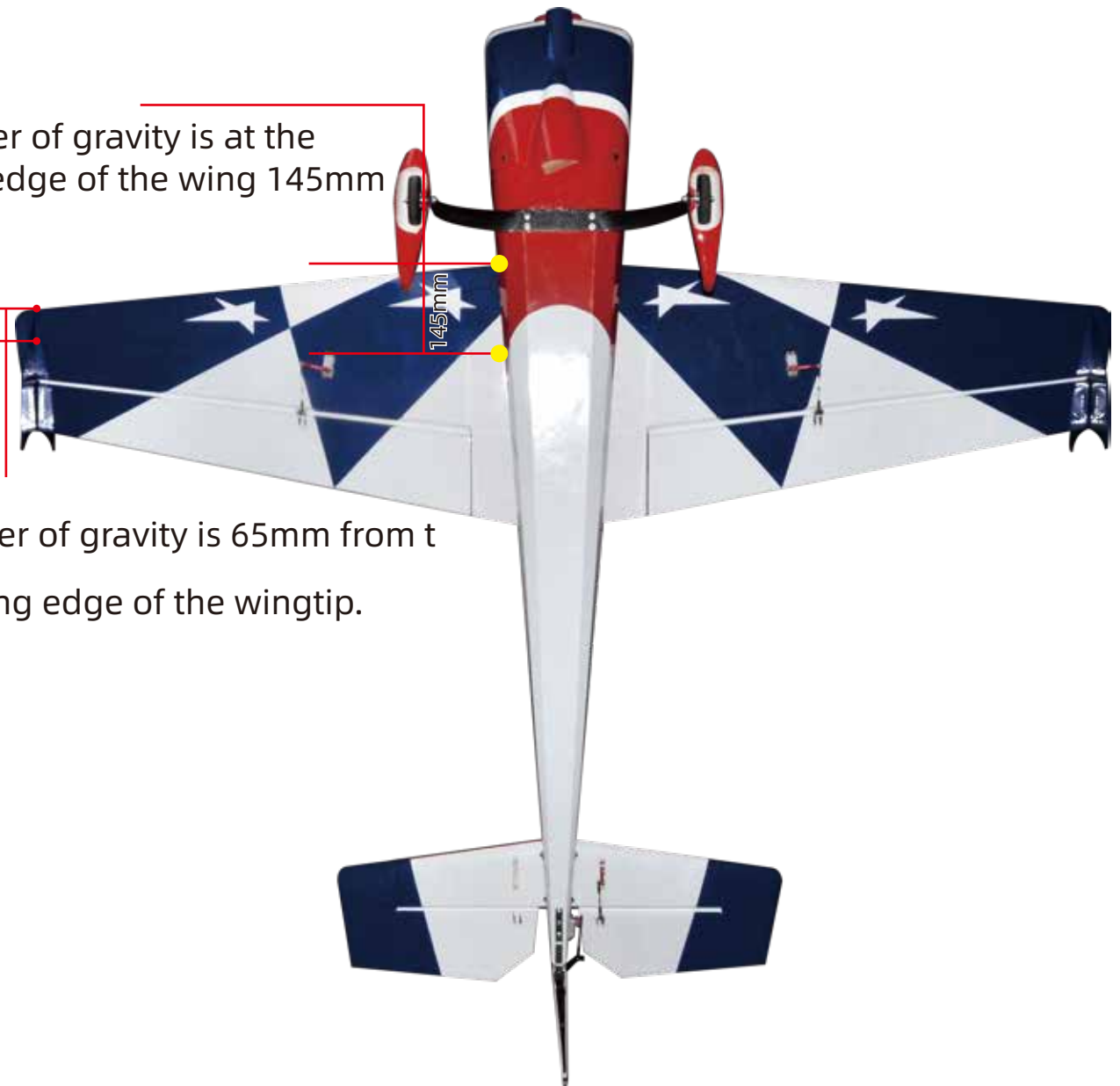


The center of gravity is at the leading edge of the wing 145mm

65mm

145mm

The center of gravity is 65mm from the leading edge of the wingtip.



THE FINISHED PHOTO



Dong Guan Flight Aviation Technology Co.,Ltd.

**Add : Rm 401, No. 14 Xinhe Rd, Xiaobian, Chang'an
Town, Dongguan, Guangdong, China**

Tel: +86-769-13392744889

E-mail:zyhobby@hotmail.com

www.flight-model.com/

www.zyhobby.com/